

A close-up, high-contrast portrait of Katy Rise. She is looking slightly to the left with a soft expression. Her dark hair is pulled back, and she is wearing a black leather jacket. The lighting is dramatic, highlighting her facial features.

KATYRISE

ARTIST NAME: KATY RISE

FROM: UKRAINE

BOOKING: WORLDWIDE

CATEGORY: DJ/PRODUCER

Katy Rise Dj and Producer from Ukraine. Since her childhood Music has always been a part of her life. It's all started with playing the piano and as a DJ Her career started in 2016.

She took all attention with her unique music taste, which she had represented on her exclusive live streams "Stay with Nature" on her YouTube channel and radio podcasts. Which had gathered thousands of views and support from all around the world. By 2020, she became a cofounder of the organizational musical movement "NATURE BEAT".

2021 it's the beginning of Katy Rise rising as a Producer in Melodic Techno & Progressive House music. She took a step in with her "Elevation" track and have been supported by many top artists worldwide. From the first moment of the release "We Are One" she directly occupied her positions on "HypeTop100" Progressive House on Beatport.

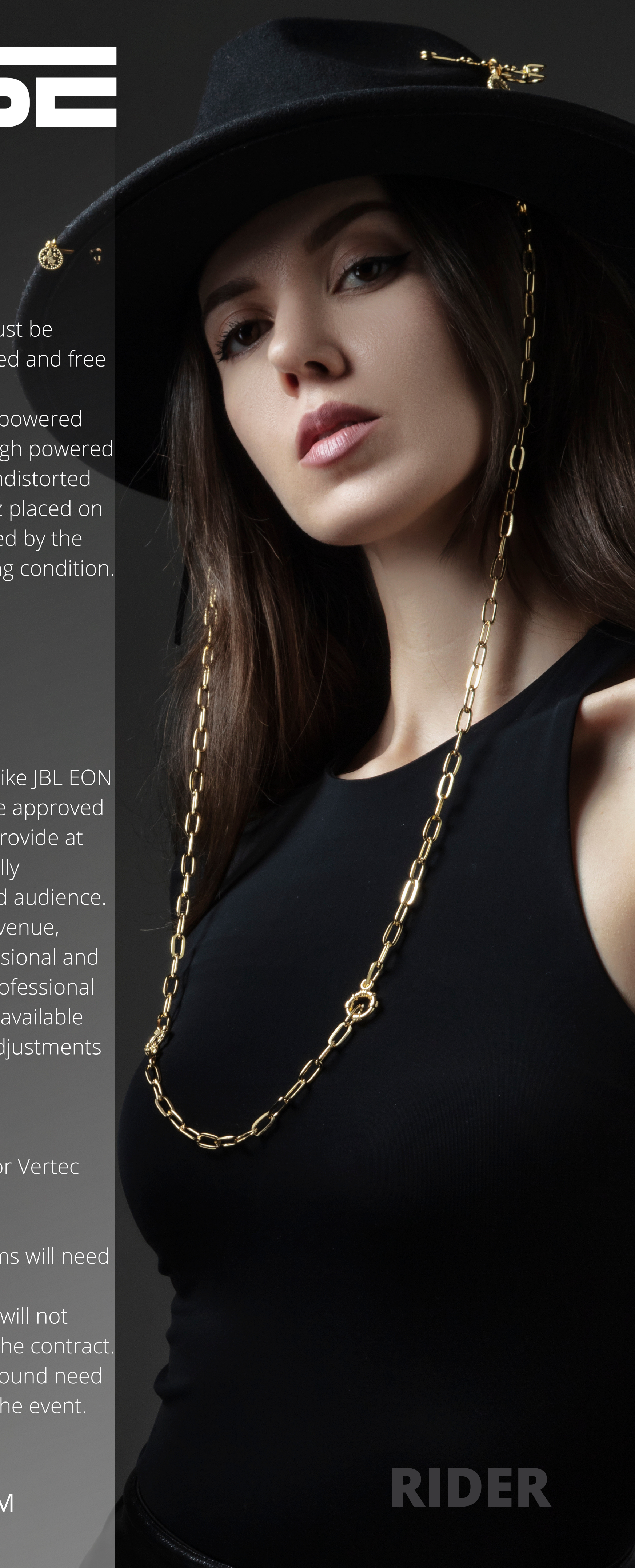
Purely self-made and unstoppably she's reaching the next levels, but in Katy Rise's career the best is yet to come. In the near future Katy Rise preparing her biggest releases.

Katy Rise Live performances always carry a powerful euphoric atmosphere and leave an unforgettable experience and feelings.

WEBSITE: WWW.KATYRISE.COM

MNG/BOOKING: INFO@KATYRISE.COM

KATYRISE



TECHNICAL PROVISIONS :

- 2x Pioneer CDJ-2000NXS2 (or CDJ 3000) all CDJ's must be linked via Ethernet Cables/Ethernet Hob, securely fixed and free of any technical problems and latest update).
- 1x Pioneer DJM-900NXS2 (or DJM-900 Nexus) High powered Monitor System, that can achieve and maintain an High powered Monitor System, that can achieve and maintain an undistorted sound pressure level of 120dBA from 35HZ to 18KHz placed on left and right side, at a chest to head height, controlled by the monitor output of the mixer and be in perfect working condition. Preferred

Monitor Systems:

- D&B Audiotechnik
- L'Acoustics
- Martin Audio Funktion One
- Funktion One
- Meyer Sound Note: No budget powered monitors like JBL EON Mackie, RCF or EV. Any other monitors will need to be approved by artist's management. PA System The venue is to provide at their expense, a complete PA system that must be fully operational and suitable for the size of the venue and audience. It must provide at least 110 dBA in the centre of the venue, without any distortion from 30HZ to 18KHZ. A professional and qualified monitor and/or FOH engineer must be A professional and qualified monitor and/or FOH engineer must be available during the sound check and performance to make adjustments at the artist's request if needed Preferred

Sound Systems:


- D&B Audiotechnik (C, Q, or J series only)
- L'Acoustics (ARC, K1, VDosc, dV,Dosc only) JBL (VRX or Vertec 4888 or 4889 only)
- Martin Audio (W8 only)
- Funktion One Meyer Sound Any other sound systems will need to be approved by the artist's management.

NOTE: If the technical rider is not in order the artist will not perform and the full fee has to be paid as agreed in the contract. Possible limitations involving the P.A. or the level of sound need to be reported to booking agent two weeks prior to the event.

WEBSITE: WWW.KATYRISE.COM

MNG/BOOKING: INFO@KATYRISE.COM

RIDER



KATYRISE

DRIVER:

- Driver shall meet the Artist at the airport (or other point of arrival).
- Driver details for all journeys including name/tel.number/car numbers shall be confirmed and sent to the Agent no later than 2 days prior to the Event.
- Driver shall speak English well.
- Buyer is responsible for safe and Professional transfer for the Artist and Tour Manager and their luggage to and from the hotel , the Event and airport locations.

HOTEL:

- Hotel has to be approved and confirmed by the Agent prior to the booking.
- 1 Suit with a king-size bed shall be booked on the name Kateryna Zapanovych.
- Hotel rate shall include breakfast or all-inclusive restaurant.
- Unlimited free Internet connection.
- The hotel must have a 24-hour in-room dining service.

EVENT:

- Artist shall arrive to the Event no earlier than 30 minutes prior to the Artist's performance , unless otherwise approved by the Artist or Tour Manager.
- During KATY RISE's performance Absolutely NO ONE but sound , lighting technician is allowed on the stage or in the DJ Booth , unless otherwise authorized by the Artist or Tour Manager.

PROVISIONS AT EVENT:

- 1 Bottle of Hendricks Gin
- 1 Bottle of Schweppes Tonic
- 5 Bottles Still Water (non-chilled)
- 3 Bottles of Sparkling Water (non-chilled)
- 1 Ice Bucket+Ice+Lemon&Lime (sliced)
- Stirrers & Straws
- 1 Fruit platter
- 2 Clean towels
- 1 Pack of paper towels/napkins

HOSPITALITY RIDER

WEBSITE: WWW.KATYRISE.COM
MNG/BOOKING: INFO@KATYRISE.COM

KATYRISE

PAYMENT:

All payments for the Artist have to be cleared prior to the Show. Upon confirmation of the booking , the Artist shall be given 50% of their fee , with the balance 50% to be given the day of the event.

CANCELATIONS POLICY:

Any last minute cancellations (less than 3 days) need to be paid in full to the Artist.

If there are any questions or uncertainties about this rider , please contact Artist's Management at least 2 weeks prior to the confirmed performance.

WEBSITE: WWW.KATYRISE.COM

MNG/BOOKING: INFO@KATYRISE.COM

RIDER